

# Rapid Response™ RSV Test Cassette

(Nasopharyngeal Swab / Nasal Aspirate)

INFECTIOUS DISEASES

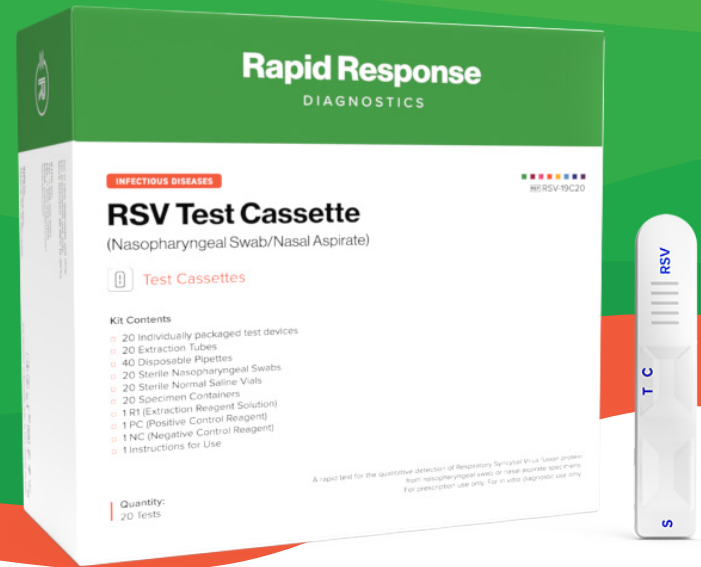
**CLIA WAIVED**

For prescription use only

For *in vitro* diagnostic use only

**CPT Codes\*:**

RSV assay with optic. **87807QW**



The Rapid Response™ RSV Test Cassette is for the qualitative detection of Respiratory Syncytial Virus antigen in nasopharyngeal swab and nasal aspirate. The test is intended for use as an aid in the diagnosis of acute respiratory syncytial virus infection in children less than 6 years and adults over the age of 60. The Rapid Response™ RSV Test Cassette is **CLIA Waived** and intended for *in vitro* diagnostic use only.

Respiratory Syncytial Virus (RSV) is highly contagious and can be spread through droplets containing the virus when someone coughs or sneezes. It can also live on surfaces, on hands and clothing. RSV is a major cause of respiratory illness in young children, affecting the lungs and breathing passages. In adults, RSV may only produce symptoms of a common cold, such as a stuffy or runny nose, sore throat, mild headache, cough, fever, and a general feeling of being ill. But in premature babies and kids with compromised immune system, lung or heart diseases, RSV can cause severe illnesses.<sup>1</sup>

## Kit Content

- 20 Individually packaged test devices
- 20 Sterile nasopharyngeal swabs
- 20 Specimen processing tubes
- 20 Sterile normal saline vials
- 20 Extraction tubes
- 40 Disposable pipettes
- 1 R1 (Extraction reagent Solution)
- 1 PC (Positive control reagent)
- 1 NC (Negative control reagent)
- 1 Instructions for use

## Details

**Sample:** Nasopharyngeal swab/  
Nasal aspirate

**Format:** Cassette

**Time-to-Result:** 15 minutes

**Storage Condition:** 36-86°F (2-30°C)

**Test Principle:** Lateral Flow Assay



## Detects RSV Nucleoproteins

Aids in the rapid detection of respiratory syncytial virus viral infections.



## Improved Patient Care

With results available in just 15 minutes, it enables swift decision-making for treatment or isolation to help reduce the spread of RSV infections.



## Easy & Convenient

Test from a single swab sample. Sterile swabs are included with each kit, simplifying the collection process.



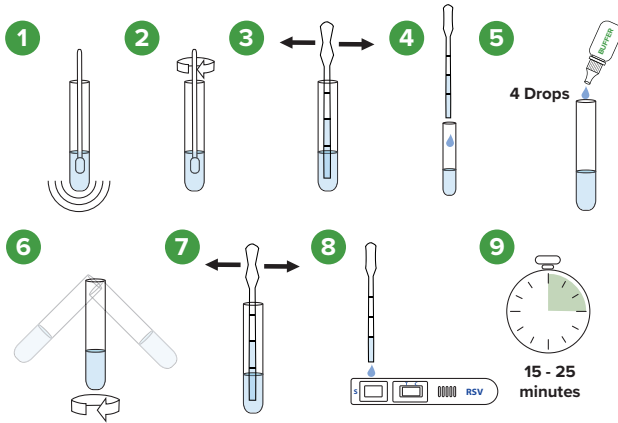
## Complete Kit

Necessary components are included with each kit, facilitating organized and mess-free testing.

1. Glezen, WP; Taber, LH; Frank, AL; Kasel, JA (1986). "Risk of primary infection and reinfection with respiratory syncytial virus". American journal of diseases of children (1960). 140(6): 543-6. doi:10.1001/archpedi.1986.02140200053026.PMID 3706232.

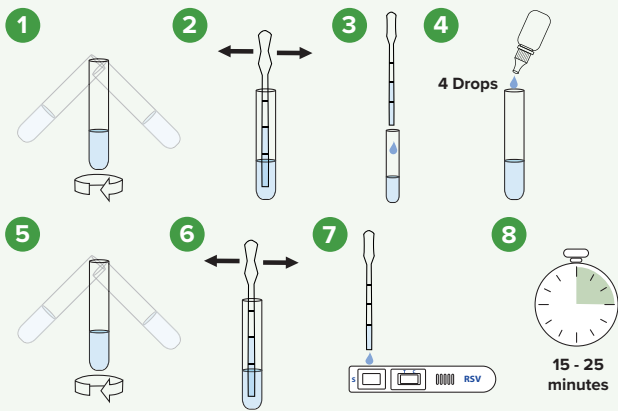
\*All CPT codes are supplied for information purposes only and represent no statement, promise or guarantee by Lochness Medical Supplies Inc. that these codes will be appropriate or that reimbursement will be made. It is the responsibility of the service provider to confirm the appropriate coding required by their local Medicare carriers, fiscal intermediaries and commercial payors.

## Testing Procedure



### Nasopharyngeal Swab:

1. Stir the swab in the specimen processing container.
2. Roll the swab head against the inside of the specimen processing container. Dispose the swab.
3. Draw 160 µL of the sample up into a disposable pipette (supplied with kit).
4. Add entire contents of the pipette to the extraction tube.
5. Add 4 drops of R1 to the extraction tube.
6. Gently swirl the extraction tube to mix.
7. Draw 160 µL of the sample up into a disposable pipette.
8. Add entire contents of the pipette to the sample well of the test device.
9. Read the test result between 15-25 minutes.



### Nasal Aspirate:

1. Swirl sample to suspend cellular material.
2. Draw 160 µL of nasal aspirate into the disposable pipette.
3. Add entire contents of the pipette to the extraction tube.
4. Add 4 drops of R1 to the extraction tube.
5. Gently swirl the extraction tube to mix.
6. Draw 160 µL of the sample with a disposable pipette.
7. Add entire contents of the pipette to the sample well (S) of the test device.
8. The test results should be read between 15-25 minutes.

These instructions are for illustrative purposes only. Please read the instructions supplied with the test before use.

## Result Interpretation



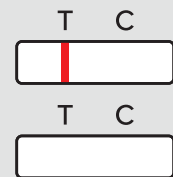
### Positive

**TWO lines appear**, one in the control region (C) and one in the test region (T). This result indicates the sample was positive for RSV viral antigen.



### Negative

**ONE line appears in the control region (C)** and no line appears in the test region (T). This result indicates the sample is negative for RSV viral antigens.



### Invalid

No coloured line appears in the control region (C). The test is invalid even if there is a line in the test region (T).

## Ordering Information

Product Code	Product Name	Contents
RSV-19C20	RSV Test Cassette	20 Tests

To learn more contact your local **Sales Representative**, call us at **+1 888-506-2658**, or email us at **info@lochnessmedical.com**